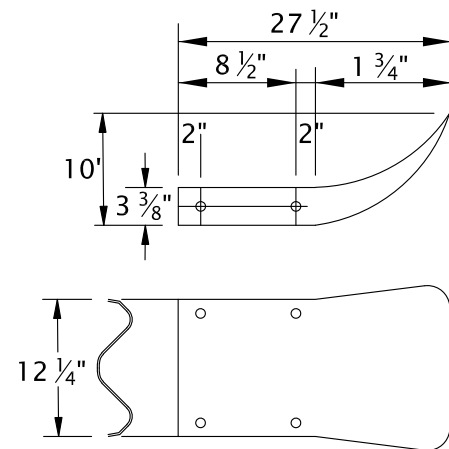
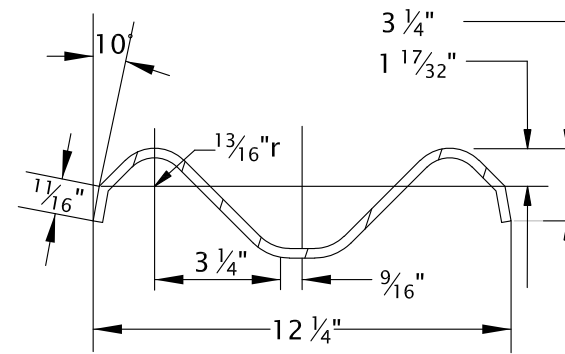


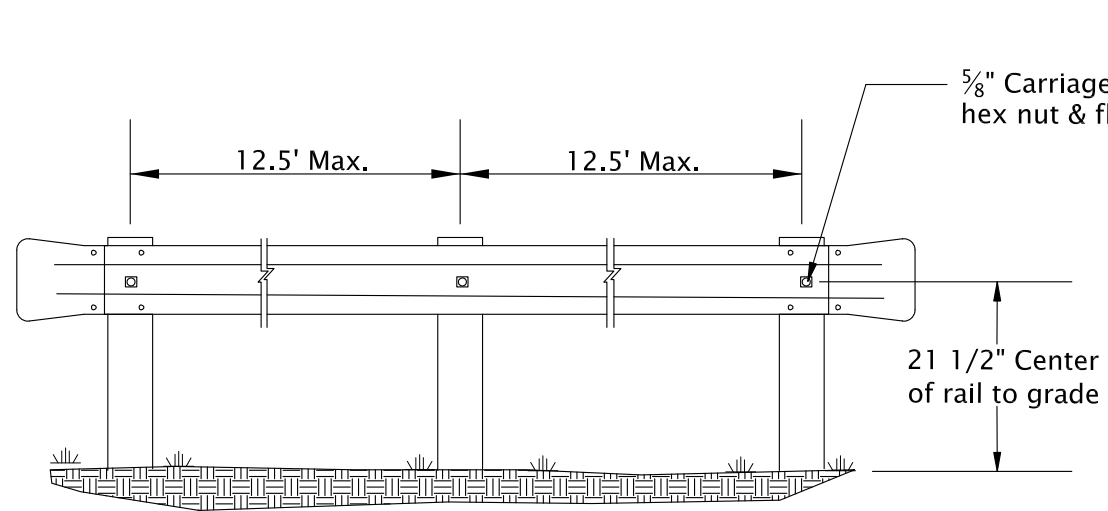
36' DEAD END STREET INSTALLATION



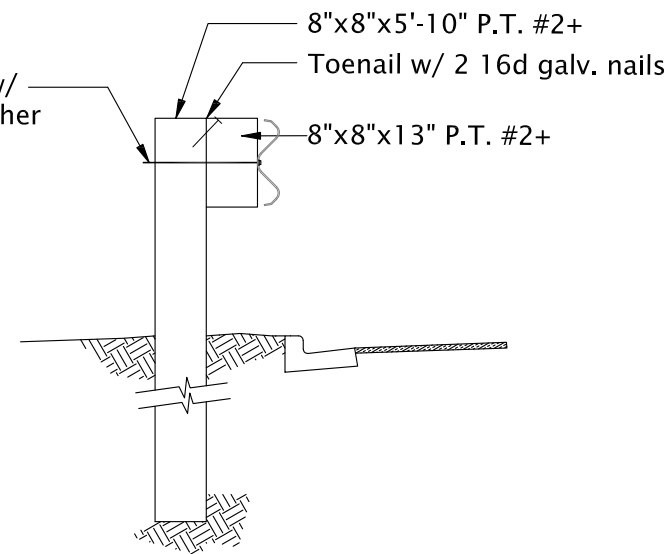
TERMINAL SECTION



SECTION THROUGH RAIL



ELEVATION



SECTION

General Notes:

1. Guard rail shall be galvanized steel beam and conform to the requirement of AASHTO M180.
2. All wood shall be creosote or pressure treated, No. 2 or better.
3. Reflective tape installed by Streets Department.

The selection and use of this standard drawing, while designed in accordance with generally accepted engineering principles and practices, is the sole responsibility of the user.

Designed By:	STAFF
Drawn By:	KJD
Checked By:	MPT
Approved:	JMC

No.	Date	Revisions	App. By



CITY OF GRANTS PASS
 101 Northwest 'A' Street
 Grants Pass, OR 97526
 (541) 450-6060 ph (541) 476-9218 fax

GUARDRAIL (BARRICADE)

2018

DWG. NO. GP400