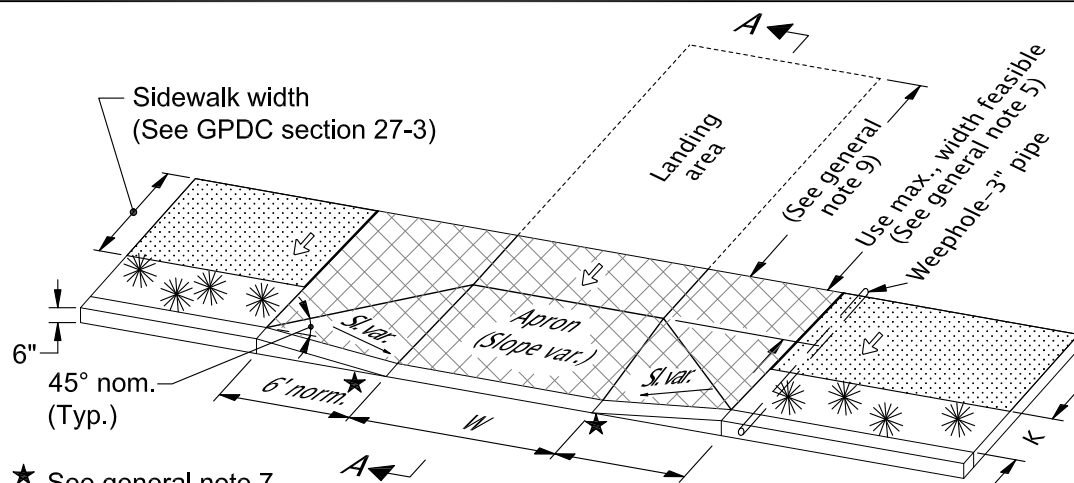


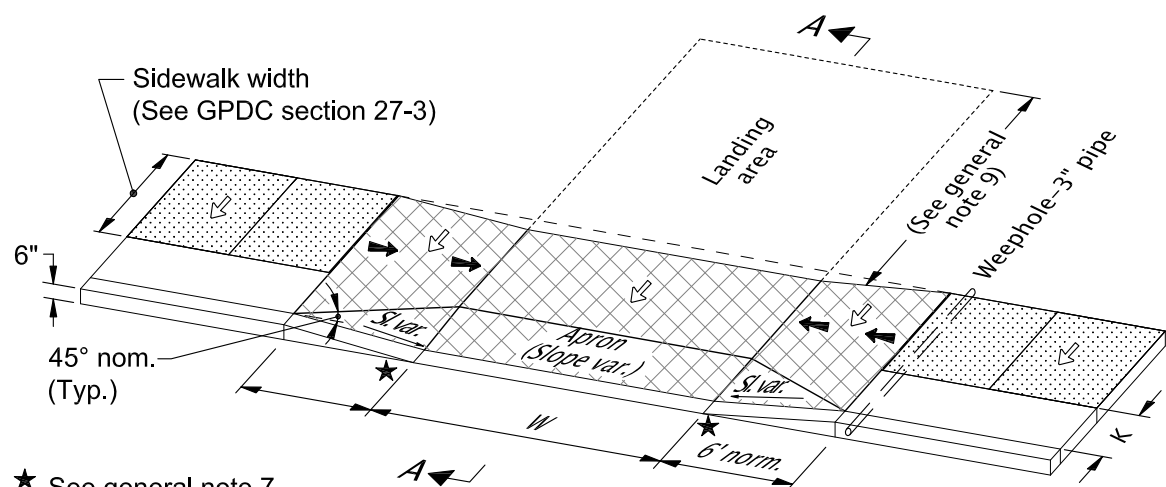
★ See general note 7  
Gutter pan not shown for clarity

**OPTION A**  
**DRIVEWAY APPROACH WITH PLANTER STRIP**  
(Use one of the options below if slope requirements shown in Section A-A cannot be met)



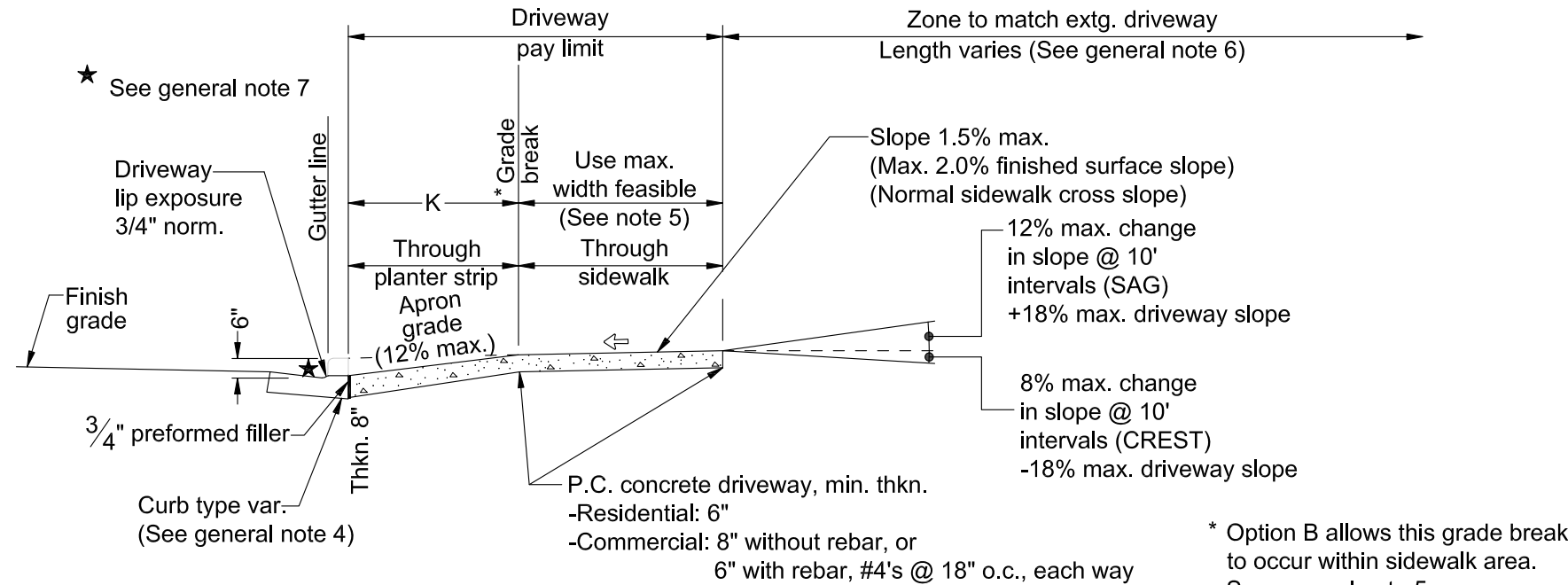
★ See general note 7  
Gutter pan not shown for clarity

**OPTION B**  
**DRIVEWAY ENCLOSES INTO SIDEWALK**



★ See general note 7  
Gutter pan not shown for clarity

**OPTION C**  
**DRIVEWAY WITH LOWERED SIDEWALK**



**SECTION A-A**

**General Notes for all details:**

1. Details are based on United States Access Board Standards.
2. Only use details allowed by jurisdiction.
3. The following dimensions are as shown on the plans, or as directed: driveway width, driveway slope, sidewalk width, planter strip width, landing area length and width. See project plans for details not shown.
4. Curb, gutter and sidewalk types varies, see plans. See Std. Dwg. GP700 for curb details. See Std. Dwg. GP720 for sidewalk details.
5. 4' min. unobstructed clear passage with slope 1.5% max. (Max. 2.0% finished surface slope) is required behind driveway apron.
6. Where existing driveway in good condition, and meets slope requirements, construct only as much as required for satisfactory connection with new work.
7. Check the gutter flow depth at driveway locations to assure that the design flood does not overtop the back of sidewalk at driveway. If overtopping occurs, place an inlet at upstream side of driveway or perform the approved design mitigation.
8. Tooled joints are required at all driveway slope break lines.

9. 15' min. of the driveway behind the sidewalk should be surfaced to prevent tracking of gravel onto the sidewalk, or as directed by City Engineer.
10. Monolithic curb and sidewalk shall retain thickened edge through lowered profile, to accommodate driveway use. See Std. Dwg. GP720 for details.
11. See project plans for details not shown.
12. See concrete standards page for additional requirements.
13. An edging tool shall be used on all edges and joints.
14. Provide 3" drainage pipe and weep hole at every approach.
15. Surface shall not vary more than 1/4" under a 12' straightedge.
16. Existing AC shall be removed/replaced along entire curb section to a min. 18" width, or width that provides for a 6% or less cross-slope, or as directed by the Engineer.
17. Concrete shall not be placed until forms have been inspected by City Engineer.
18. An encroachment permit is required prior to starting any work within right-of-way.
19. Existing survey monuments of record shall be protected in place during construction. If disturbed, contractor is responsible for replacement of said survey monument(s) per O.R.S. 209.150.
20. Driveway shall not be constructed within 20' of intersection radius for local streets, 100' for collectors and 150' for arterial streets.

- Sidewalk
- Driveway pay limit (See project plans for details not shown)
- Slope 1.5% max. (Max. 2.0% finished surface slope) (Normal sidewalk cross slope)
- Slope 7.5% max. (Max. 8.3% finished surface slope) (Ramp length 15' max., measured along finished surface slope)

- W** Width of driveway  
-Residential: 10' min.- 24' max.  
-Commercial: 12' min.- 16' max. for one way  
24' min.- 32' max. for two way
- K** Planter strip width as directed

The selection and use of this standard drawing, while designed in accordance with generally accepted engineering principles and practices, is the sole responsibility of the user.		Designed By: STAFF	
		Drawn By: KJD	
		Checked By: MPT	
		Approved: JMC	
No.	Date	Revisions	App. By



**CITY OF GRANTS PASS**  
101 Northwest 'A' Street  
Grants Pass, OR 97526  
(541) 450-6060 ph (541) 476-9218 fax

**RESIDENTIAL AND COMMERCIAL**  
**APPROACH WITH PLANTER STRIP**

2018

DWG. NO. GP740