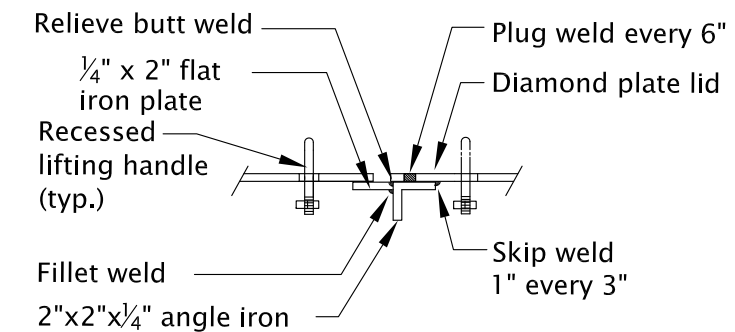
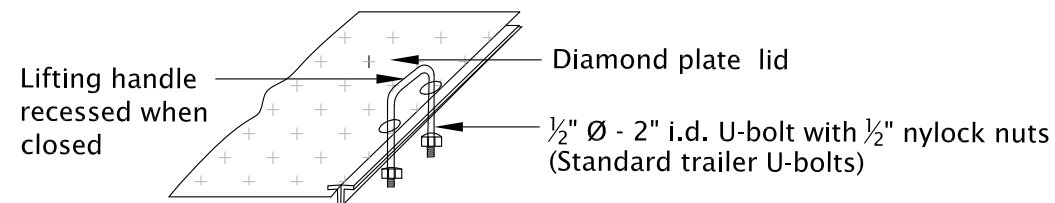


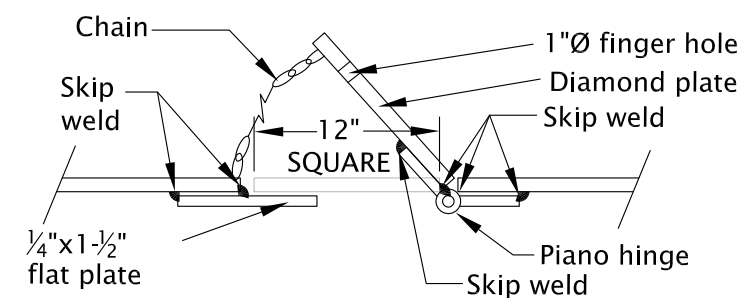
**HINGE DETAIL - CROSS-SECTION "A"**



**LID SUPPORT DETAIL CROSS-SECTION "B"**



**LIFTING HANDLE DETAIL**



**PEEP HOLE DETAIL CROSS-SECTION "C"**

**General Notes:**

1. See Std. Dwg. GP214 for vault specifications.
2. Top configuration shall be based on size of vault. Size of each lid not to exceed 9 sq. ft.
3. All metal surfaces shall be removed of mill scales and degreased and painted with one coat of red primer and two coats of deep blue finish (rustoleum or approved equal).
4. Each individual door shall be equipped with one chain to hold door open at 135° from closed position.

The selection and use of this standard drawing, while designed in accordance with generally accepted engineering principles and practices, is the sole responsibility of the user.

Designed By: STAFF  
 Drawn By: KJD  
 Checked By: MPT  
 Approved: JMC



**CITY OF GRANTS PASS**  
 101 Northwest 'A' Street  
 Grants Pass, OR 97526  
 (541) 450-6060 ph (541) 476-9218 fax

No.	Date	Revisions	App. By

**VAULT TOP ASSEMBLY**

2018

DWG. NO. GP215